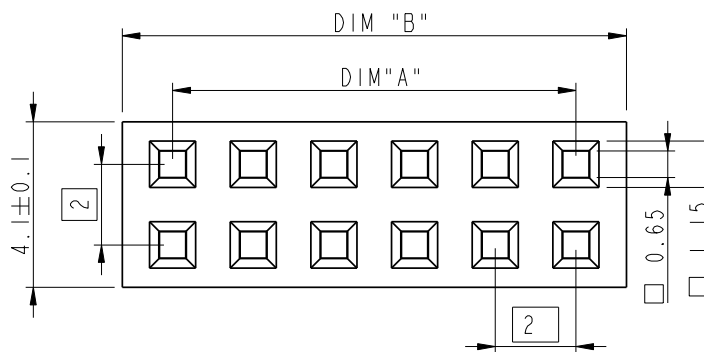
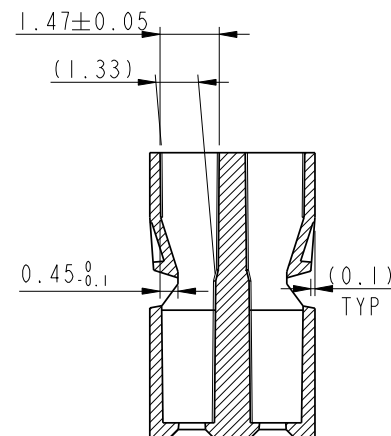
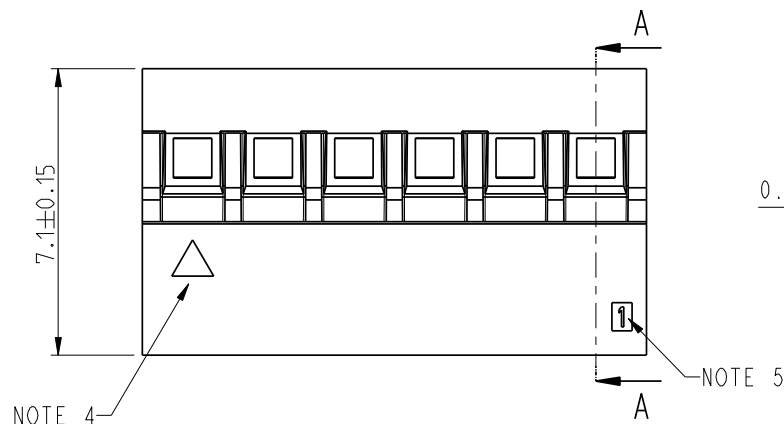


PRODUCT NUMBER	SIZE	DIM A	DIM B
69307-004LF	2x2	2.0	4.4
69307-006LF	2x3	4.0	6.4
69307-008LF	2x4	6.0	8.4
69307-010LF	2x5	8.0	10.4
69307-012LF	2x6	10.0	12.4
69307-014LF	2x7	12.0	14.4
69307-016LF	2x8	14.0	16.4
69307-018LF	2x9	16.0	18.4
69307-020LF	2x10	18.0	20.4
69307-022LF	2x11	20.0	22.4
69307-024LF	2x12	22.0	24.4
69307-026LF	2x13	24.0	26.4
69307-028LF	2x14	26.0	28.4
69307-030LF	2x15	28.0	30.4
69307-032LF	2x16	30.0	32.4
69307-034LF	2x17	32.0	34.4
69307-036LF	2x18	34.0	36.4
69307-038LF	2x19	36.0	38.4
69307-040LF	2x20	38.0	40.4
69307-042LF	2x21	40.0	42.4
69307-044LF	2x22	42.0	44.4
69307-046LF	2x23	44.0	46.4
69307-048LF	2x24	46.0	48.4
69307-050LF	2x25	48.0	50.4

PRODUCT NUMBER

69307-0XXLF

TOTAL NUMBER OF POS 04 UP TO 50



NOTES:

- 1 - MATERIAL : PA66 25% GLASSFILLED, UL94V-0 COLOR BLACK.
- 2 - PRODUCT MEETS EUROPEAN UNION DIRECTIVES AND OTHERS REGULATIONS AS DESCRIBED IN GS-47-004.
- 3 - THIS PRODUCT IS NOT INTENDED TO BE EXPOSED TO MANUFACTURING SOLDER PROCESSES.
- 4 - CODING TRIANGLE INDICATES POS 1 WHEN MATED WITH MINITEK HEADER SERIES 98414 / 98417 / 98424 / 98464 10072354 / 10074920 AND 10075974.
- 5 - INDICATES POS 1, WHEN MATED WITH SERIES 90309 / 95609 AND 95615.
- 6 - FOR USE WITH MINITEK CRIMP TO WIRE CONTACT 77138 (26-30AWG) AND 10044403 (22-24AWG).
- 7 - PRODUCT SPECIFICATION AS PER 110-036, CONTACT CRIMP RECOMMENDATIONS AS PER GS-20-058.

TOLERANCES UNLESS OTHERWISE SPECIFIED

	0.X	±0.3			
LINEAR	0.XX	±0.13	-	-	-
	0.XXX	±0.050	-	-	-
ANGULAR	0°	±2°	-	-	-

rev	ecn no	dr	date
P	V08-0392	HTB	2008-09-12
R	F12-0803	JCO	2012-09-03
-	-	-	-

Material			Spec ref		
Mat code			surface -	tolerance	projection
Heat treat			✓		MM
Plating/Finish					⊕
Dr	E. KROPIEWN	1999-11-09	size A3		
Eng	L. GREEN	1999-11-09	Scale 8:1		
Chr	L. GREEN	1999-11-09	Product family		
Appr	J. COMPAGNON	2012-08-30	Model Name 69307-012		
			Model Revision		
			REL Level proj_release		
FCI			MINITEK CTW HOUSING		
			DOUBLE ROW		
Pro/E file			catalog no		
			CUSTOMER		
			1 of 1		

Mouser Electronics

Authorized Distributor

Click to View Pricing, Inventory, Delivery & Lifecycle Information:

[Amphenol:](#)

[69307-006LF](#) [69307-008LF](#) [69307-018LF](#) [69307-022LF](#) [69307-024LF](#) [69307-028LF](#) [69307-032LF](#) [69307-038LF](#)
[69307-042LF](#) [69307-048LF](#)