

Magnetic contact switch (door sensor)

PRODUCT ID: 375

IN STOCK

1

ADD TO CART

1-9

10-99

100+

ADD TO WISHLIST

[DESCRIPTION](#)

[TECHNICAL DETAILS](#)

DESCRIPTION

This sensor is essentially a reed switch, encased in an ABS plastic shell. Normally the reed is 'open' (no connection between the two wires). The other half is a magnet. When the magnet is less than 13mm (0.5") away, the reed switch closes. They're often used to detect when a door or drawer is open, which is why they have mounting tabs and screws. You can also pick up some double-sided foam tape from a hardware store to mount these, that works well without needing screws.

TECHNICAL DETAILS

- Normally open reed switch
- ABS enclosure
- Rated current: 100 mA max
- Rated voltage: 200 VDC max
- Distance: 15mm max

Dimensions:

- Box size (each side): 29mm x 14mm x 9mm / 1.1" x 0.6" x 0.4"
- Cable Length: 305mm \pm 12mm / 12" \pm 0.5"
- Weight (per side): 5.4g

[Netduino driver](#) and [Netduino sample](#). This sample shows how to use an interrupt handler to respond to a button press or a magnetic contact switch closing.



LEARN



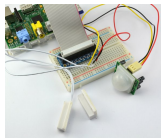
[Adafruit IO Home: Security](#)

Protect against intruders by building a security system for a cardboard smart home using Adafruit IO.



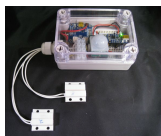
[Sitcom SFX Door Trigger](#)

A sitcom soundtrack for your life



[Adafruit's Raspberry Pi Lesson 12. Sensing Movement](#)

Sense movement and doors opening with your Raspberry Pi



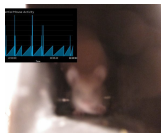
[Trinket Bluetooth Alarm System](#)

Use the Trinket to build a custom wireless alarm system



[Smart Bathroom App](#)

Know when it's open for business.



[A Sillier Mousetrap: Logging Mouse Data to Adafruit IO with the Raspberry Pi](#)

How to outfit a simple live trap with sensors and data-logging, and quantify the vermin in your life.



[Using IFTTT with Adafruit IO to Make an IoT Door Detector](#)

Know who is comin' and goin'



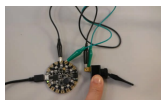
[DIY ESP8266 Home Security with Lua and MQTT](#)

Protect your home with MQTT and the ESP8266!



[Mystery Box: The Nautical Crate](#)

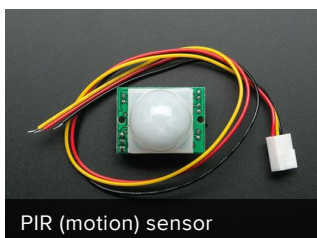
Build your own locking mystery box which can only be opened with a magnet in just the right place!



[Make It Switch](#)

When your microcontroller needs to accurately read if a switch is flipped

MAY WE ALSO SUGGEST...



PIR (motion) sensor



Tilt ball switch



Huzzah! Adafruit.io Internet

[CONTACT](#)[SUPPORT](#)[DISTRIBUTORS](#)[EDUCATORS](#)[JOBS](#)[FAQ](#)[SHIPPING & RETURNS](#)[TERMS OF SERVICE](#)[PRIVACY & LEGAL](#)[ABOUT US](#)

ENGINEERED IN NYC Adafruit®

"I long to accomplish a great and noble task, but it is my chief duty to accomplish humble tasks as though they were great and noble" - [Helen Keller](#)



4.9 ★★★★★
Google
Customer Reviews