

LED Charlieplexed Matrix - 9x16 LEDs - Warm White

PRODUCT ID: 3162

85 IN STOCK

1

ADD TO CART

☐ Also include 1 x [Adafruit 16x9 Charlieplexed PWM LED Matrix Driver - IS31FL3731](#) (0)

1-9

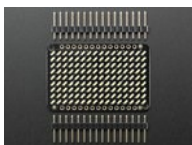
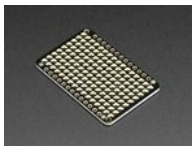
10-99

100+

ADD TO WISHLIST

[DESCRIPTION](#)

[TECHNICAL DETAILS](#)



DESCRIPTION

These are 9x16 Charlieplexed LEDs designed to match with the [Adafruit 16x9 Charlieplexed PWM LED Matrix Driver - IS31FL3731](#). You don't get any resistors or driver chips with this grid, its just a mess of LEDs in a charlieplexed arrangement

This is the Warm White version. [Check out our other colors!](#)

[Check out our detailed tutorial for Arduino & CircuitPython support, pinouts, assembly, wiring, and more!](#)

TECHNICAL DETAILS

- [Datasheets, EagleCAD PCB files, Fritzing objects and more in the tutorial](#)

Product Dimensions: 43.3mm x 28.1mm x 2.4mm / 1.7" x 1.1" x 0.1"

Product Weight: 5.7g / 0.2oz



LEARN



[IS31FL3731 16x9 Charlieplexed PWM LED Driver](#)

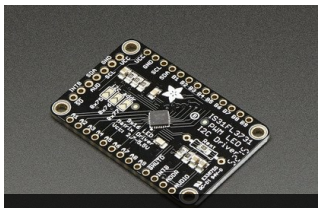
144 individually dimmable PWM LEDs over I2C



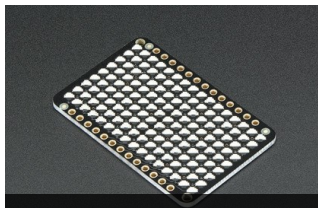
[CircuitPython Hardware: Charlieplex LED Matrix](#)

How to use Charlieplex LED matrices with CircuitPython!

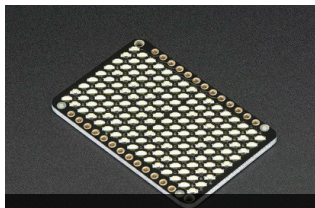
MAY WE ALSO SUGGEST...



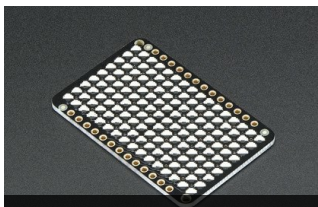
Adafruit 16x9 Charlieplexed



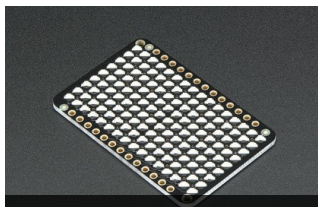
LED Charlieplexed Matrix -



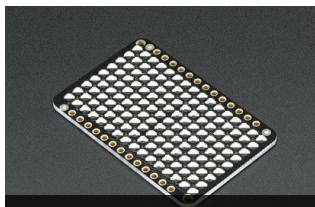
LED Charlieplexed Matrix -



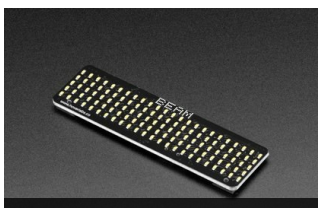
LED Charlieplexed Matrix -



LED Charlieplexed Matrix -



LED Charlieplexed Matrix -



Beam Pluggable LED

DISTRIBUTORS [EXPAND TO SEE DISTRIBUTORS](#)

[CONTACT](#)

[SUPPORT](#)

[DISTRIBUTORS](#)

[EDUCATORS](#)

[JOBS](#)

[FAQ](#)

[SHIPPING & RETURNS](#)

[TERMS OF SERVICE](#)

[PRIVACY & LEGAL](#)

[ABOUT US](#)

*"If you want to find the secrets of
the universe, think in terms of
energy, frequency and vibration" -*
Nikola Tesla

ENGINEERED IN NYC Adafruit®



4.9 ★★★★★
Google
Customer Reviews