

## Microprocessor Supervisory Circuit

### Features

- Debounced Manual Reset Input is TTL/CMOS Compatible
- Reset Pulse Width: 200 ms
- Watchdog Timer: 1.6 sec. (MIC705/6)
- 4.65V or 4.40V Precision Voltage Monitor
- Early Power-Fail Warning or Low-Battery Detect

### Applications

- Automotive Systems
- Intelligent Systems
- Critical Microprocessor Power Monitoring
- Battery-Powered Computers
- Computers
- Controllers

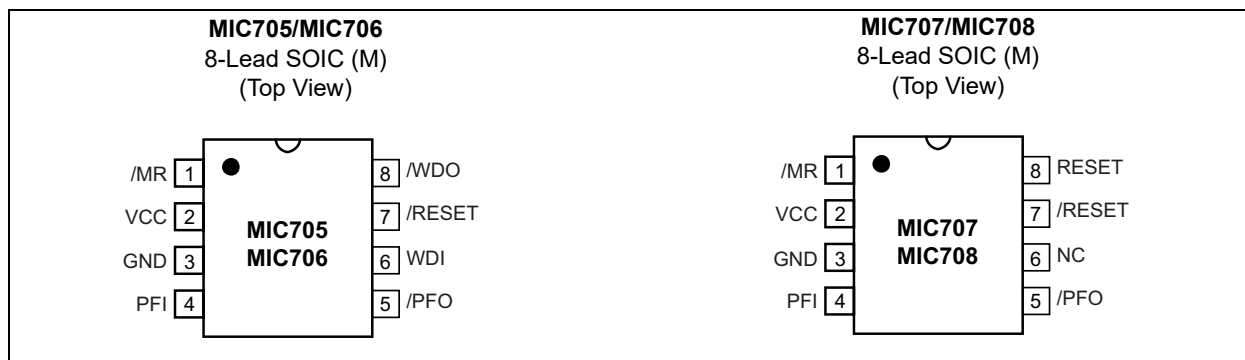
### General Description

The MIC705, MIC706, MIC707, and MIC708 are inexpensive microprocessor supervisory circuits that monitor power supplies in microprocessor-based systems. The circuit functions include a watchdog timer, microprocessor reset, power-failure warning, and a debounced manual reset input.

The MIC705 and MIC706 offer a watchdog timer function, while the MIC707 and MIC708 have an active-high reset output in addition to the active-low reset output.

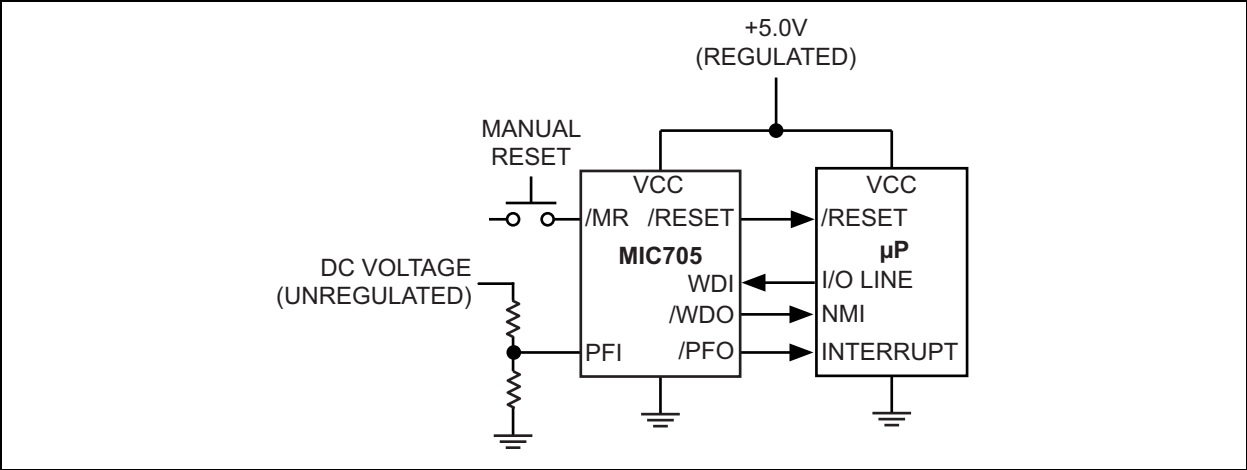
Supply voltage monitor levels of 4.65V and 4.4V are available. The MIC705 and MIC707 have a nominal reset threshold level of 4.65V while the MIC706 and MIC708 have a 4.4V nominal reset threshold level. When the supply voltage drops below the respective reset threshold level, /RESET is asserted.

### Package Types

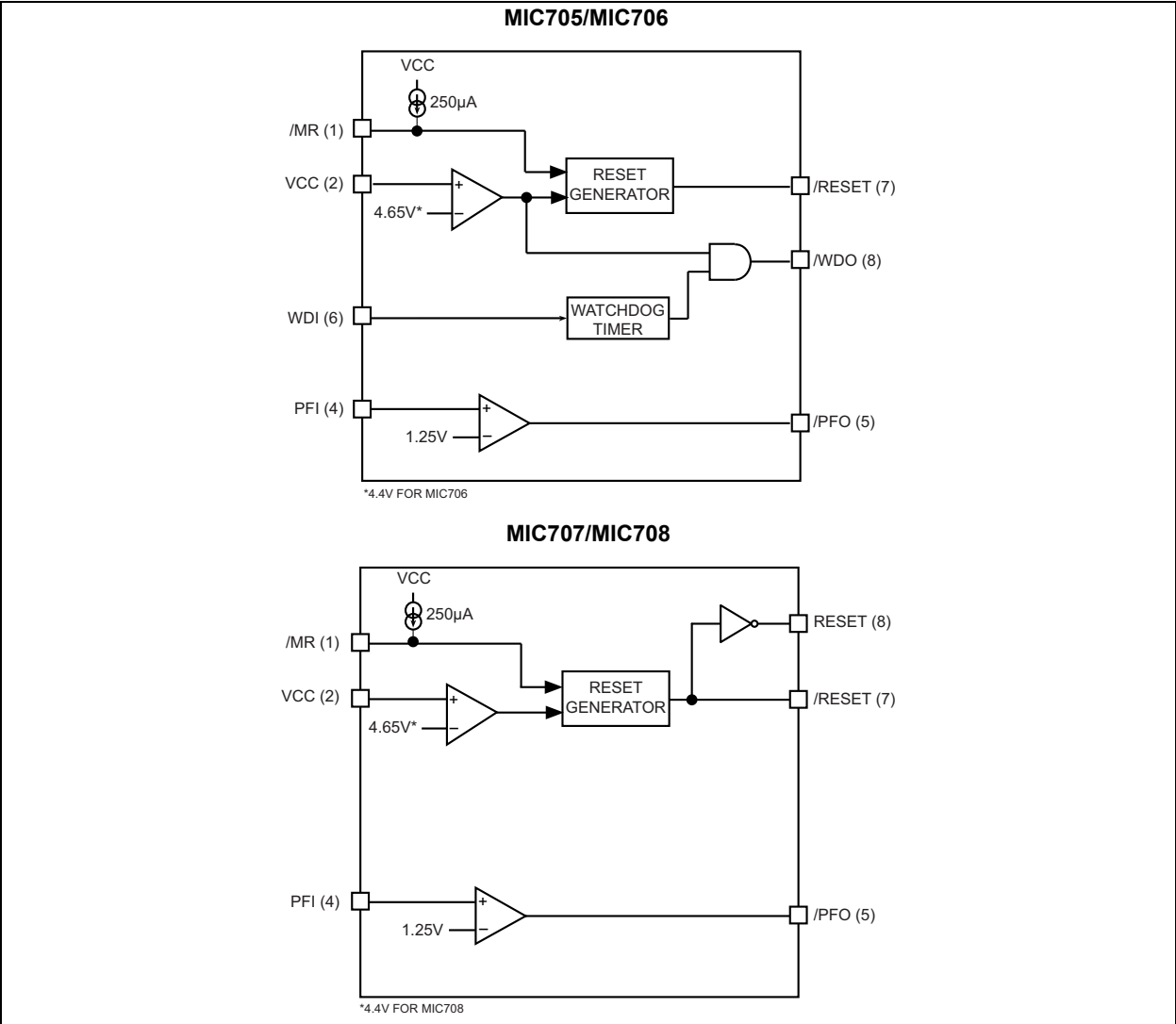


# MIC705/6/7/8

## Typical Application Circuit



## Functional Block Diagrams



## 1.0 ELECTRICAL CHARACTERISTICS

### Absolute Maximum Ratings †

Terminal Voltage ( $V_{CC}$ ).....	–0.3V to +6.0V
Terminal Voltage (All Other Inputs) .....	–0.3V to ( $V_{CC} + 0.3V$ )
Input Current ( $V_{CC}$ , GND) .....	25 mA
Output Current (All).....	20 mA

### Operating Ratings ‡

Power Dissipation (SOP) .....	400 mW
-------------------------------	--------

† **Notice:** Stresses above those listed under “Absolute Maximum Ratings” may cause permanent damage to the device. This is a stress rating only and functional operation of the device at those or any other conditions above those indicated in the operational sections of this specification is not intended. Exposure to maximum rating conditions for extended periods may affect device reliability.

‡ **Notice:** The device is not guaranteed to function outside its operating ratings.

## ELECTRICAL CHARACTERISTICS

**Electrical Characteristics:**  $V_{CC} = 4.75V$  to  $5.5V$  for MIC705/707;  $V_{CC} = 4.5V$  to  $5.5V$  for MIC706/708;  
 $T_A$  = Operating Temperature Range, **bold** values valid for  $-40^{\circ}C \leq T_A \leq +85^{\circ}C$ , unless noted. (Note 1)

Parameter	Symbol	Min.	Typ.	Max.	Units	Conditions
Operating Voltage Range	$V_{CC}$	1.4	—	5.5	V	—
Supply Current	$I_{CC}$	—	—	60	$\mu A$	—
Reset Voltage Threshold	$V_{RST}$	4.50	4.65	4.75	V	MIC705, MIC707
		4.25	4.40	4.50		MIC706, MIC708
Reset Threshold Hysteresis	$V_{RST\_HYS}$	—	40	—	mV	—
Reset Pulse Width	$t_{RS}$	140	200	280	ms	—
/RESET Output Voltage		$V_{CC} - 1.5$	—	—	V	$I_{SOURCE} = 800 \mu A$
		—	—	0.4		$I_{SINK} = 3.2 \text{ mA}$
RESET Output Voltage		$V_{CC} - 1.5$	—	—	V	$I_{SOURCE} = 800 \mu A$
		—	—	0.4		$I_{SINK} = 1.2 \text{ mA}$
Watchdog Timeout Period	$t_{WD}$	1.0	1.6	2.25	sec	—
WDI Minimum Input Pulse	$t_{WP}$	50	—	—	ns	$V_{IL} = 0.4V$ , $V_{IH} = 80\%$ of $V_{CC}$
WDI Threshold Voltage		3.5	—	—	V	$V_{IH}$ , $V_{CC} = 5V$
		—	—	0.8		$V_{IL}$ , $V_{CC} = 5V$
WDI Input Current		–150	–50	—	$\mu A$	WDI = 0V
		—	50	150		WDI = $V_{CC}$
WDO Output Voltage		$V_{CC} - 1.5$	—	—	V	$I_{SOURCE} = 800 \mu A$
		—	—	0.4		$I_{SINK} = 1.2 \text{ mA}$
/MR Pull-Up Current		100	250	600	$\mu A$	/MR = 0V
/MR Pulse Width	$t_{MR}$	150	—	—	ns	—
/MR Input Threshold	$V_{IL}$	—	—	0.8	V	—
	$V_{IH}$	2.0	—	—		—

# MIC705/6/7/8

## ELECTRICAL CHARACTERISTICS (CONTINUED)

**Electrical Characteristics:**  $V_{CC} = 4.75V$  to  $5.5V$  for MIC705/707;  $V_{CC} = 4.5V$  to  $5.5V$  for MIC706/708;  
 $T_A$  = Operating Temperature Range, **bold** values valid for  $-40^{\circ}C \leq T_A \leq +85^{\circ}C$ , unless noted. (Note 1)

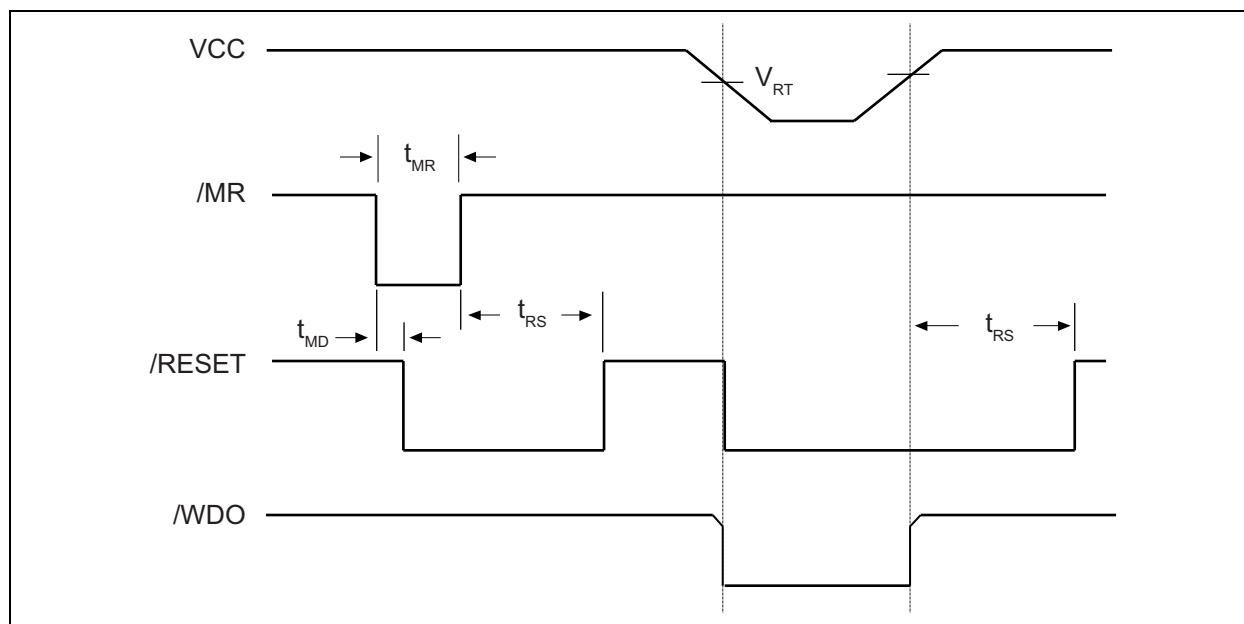
Parameter	Symbol	Min.	Typ.	Max.	Units	Conditions
/MR-to-Reset Output Delay	$t_{MD}$	—	—	250	ns	—
PFI Input Threshold		1.2	1.25	1.3	V	$V_{CC} = 5V$
PFI Input Current		-25	0.01	25	nA	—
/PFO Output Voltage		—	—	0.4	V	$I_{SINK} = 3.2\text{ mA}$
		$V_{CC} - 1.5$	—	—		$V_{CC} = 5V, I_{SOURCE} = 800\text{ }\mu A$

**Note 1:** Specification for packaged product only.

## TEMPERATURE SPECIFICATIONS

Parameters	Sym.	Min.	Typ.	Max.	Units	Conditions
<b>Temperature Ranges</b>						
Operating Temperature Range	$T_A$	-40	—	+85	$^{\circ}C$	—
Storage Temperature	$T_S$	-65	—	+150	$^{\circ}C$	—
Lead Temperature	$T_{LEAD}$	—	—	+300	$^{\circ}C$	Soldering, 10 sec.

## Timing Diagram



**FIGURE 1-1:** Reset Timing Diagram.

## 2.0 PIN DESCRIPTIONS

The descriptions of the pins are listed in [Table 2-1](#).

**TABLE 2-1: PIN FUNCTION TABLE**

Pin Number MIC705/6	Pin Number MIC707/8	Pin Name	Description
1	1	/MR	Manual reset input forces /RESET to assert when pulled below 0.8V. An internal pull-up current of 250 $\mu$ A on this input forces it high when left floating. This input can also be driven from TTL or CMOS logic.
2	2	VCC	Primary supply input, +5V.
3	3	GND	IC ground pin, 0V reference.
4	4	PFI	Power-Fail Input: Internally connected to the power-fail comparator which is referenced to 1.25V. The power-fail output (/PFO) remains high if PFI is above 1.25V. PFI should be connected to GND or VCC if the power-fail comparator is not used.
5	5	/PFO	Power-Fail Output: The power-fail comparator is independent of all other function on this device.
6	N/A	WDI	Watchdog Input. The WDI input monitors microprocessor activity; an internal watchdog timer resets itself with each transition on the watchdog input. If the WDI pin is held high or low for longer than the watchdog timeout period, /WDO is forced to active low. The watchdog function can be disabled by floating the WDI pin.
N/A	6	NC	Not internally connected.
7	7	/RESET	/RESET is asserted if either $V_{CC}$ goes below the reset threshold voltage or by low signal on the manual reset input (/MR). /RESET remains asserted for one reset timeout period (200 ms) after $V_{CC}$ exceeds the reset threshold voltage or after the manual reset pin transition from low to high. The watchdog timer will not assert /RESET unless /WDO is connected to /MR.
8	N/A	/WDO	Output for the watchdog timer. The watchdog timer resets itself with each transition to the watchdog input. If the WDI pin is held high or low for longer than the watchdog timeout period, /WDO is forced low. /WDO will also be forced low if $V_{CC}$ is below the reset threshold voltage and will remain low until $V_{CC}$ returns to a valid level.
N/A	8	RESET	RESET is the compliment of /RESET and is asserted if either $V_{CC}$ goes below the reset threshold voltage or by a low signal on the manual reset input (/MR). RESET is suitable for microprocessor systems that use active high reset.

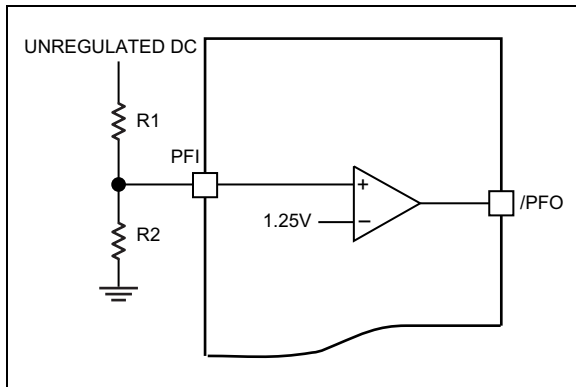
## 3.0 APPLICATION INFORMATION

### 3.1 Microprocessor Reset

The /RESET pin is asserted whenever  $V_{CC}$  falls below the reset threshold voltage or when /MR goes low. The reset pin remains asserted for a period of 200 ms after  $V_{CC}$  has risen above the reset threshold voltage and /MR goes high. The reset function ensures the microprocessor is properly reset and powers up into a known condition after a power failure. /RESET will remain valid with  $V_{CC}$  as low as 1.4V.

### 3.2 Power-Fail Warning

An additional comparator that is independent of the other functions on the MIC705/6/7/8 is provided for early warning of power failure. An external voltage divider can be used to compare unregulated DC to an internal 1.25V reference. The voltage divider ratio on the input of the power-fail comparator (PFI) can be chosen so as to trip the power-fail comparator a few milliseconds before  $V_{CC}$  falls below the maximum reset threshold voltage. The output of the power-fail comparator (/PFO) can be used to interrupt the microprocessor when used in this mode and execute shutdown procedures prior to power loss. Hysteresis can be added to this comparator with external resistors, as is commonly done with any comparator.



**FIGURE 3-1:** *Power-Fail Comparator.*

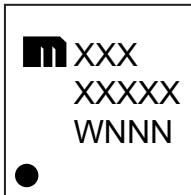
### 3.3 Watchdog Timer

The microprocessor can be monitored by connecting the WDI pin (watchdog input) to a bus line or an I/O line. If a transition doesn't occur on the WDI pin within the watchdog timeout period, then /WDO will go low. A minimum pulse of 50 ns or any transition low-to-high or high-to-low on the WDI pin will reset the watchdog timer. The output of the watchdog timer (/WDO) will remain high if WDI left floating. If  $V_{CC}$  falls below the reset threshold voltage, then /WDO goes low immediately regardless of WDI.

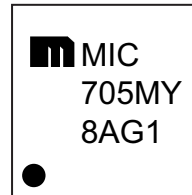
## 4.0 PACKAGING INFORMATION

### 4.1 Package Marking Information

8-Lead SOIC\*



Example

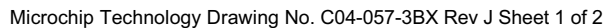


<b>Legend:</b>	XX...X	Product code or customer-specific information
	Y	Year code (last digit of calendar year)
	YY	Year code (last 2 digits of calendar year)
	WW	Week code (week of January 1 is week '01')
	NNN	Alphanumeric traceability code
	(e3)	Pb-free JEDEC® designator for Matte Tin (Sn)
	*	This package is Pb-free. The Pb-free JEDEC designator ((e3)) can be found on the outer packaging for this package.
	•, ▲, ▼	Pin one index is identified by a dot, delta up, or delta down (triangle mark).
<b>Note:</b>	In the event the full Microchip part number cannot be marked on one line, it will be carried over to the next line, thus limiting the number of available characters for customer-specific information. Package may or may not include the corporate logo.	
	Underbar ( _ ) symbol may not be to scale.	

**Note:** If the full seven-character YYWWNNN code cannot fit on the package, the following truncated codes are used based on the available marking space:  
 6 Characters = YWWNNN; 5 Characters = WWNNN; 4 Characters = WNNN; 3 Characters = NNN;  
 2 Characters = NN; 1 Character = N

---

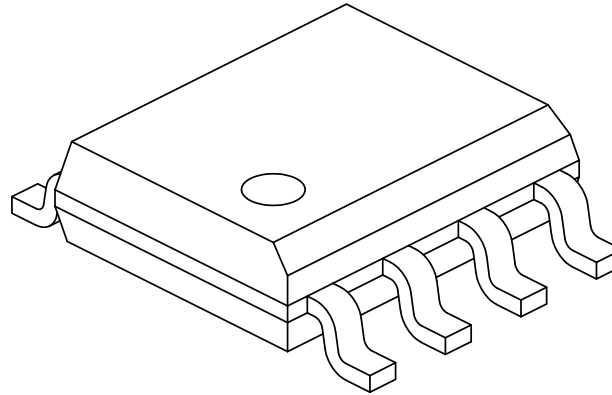
<b>Note:</b>	For the most current package drawings, please see the Microchip Packaging Specification located at <a href="http://www.microchip.com/packaging">http://www.microchip.com/packaging</a>
--------------	----------------------------------------------------------------------------------------------------------------------------------------------------------------------------------------





## 8-Lead Plastic Small Outline (3BX) - Narrow, 3.90 mm (.150 In.) Body [SOIC] Atmel Legacy Global Package Code SWB

**Note:** For the most current package drawings, please see the Microchip Packaging Specification located at <http://www.microchip.com/packaging>



Units		MILLIMETERS		
Dimension	Limits	MIN	NOM	MAX
Number of Pins	N	8		
Pitch	e	1.27 BSC		
Overall Height	A	—	—	1.75
Molded Package Thickness	A2	1.25	—	—
Standoff §	A1	0.10	—	0.25
Overall Width	E	6.00 BSC		
Molded Package Width	E1	3.90 BSC		
Overall Length	D	4.90 BSC		
Chamfer (Optional)	h	0.25	—	0.50
Foot Length	L	0.40	—	1.27
Footprint	L1	1.04 REF		
Lead Thickness	c	0.17	—	0.25
Lead Width	b	0.31	—	0.51
Lead Bend Radius	R	0.07	—	—
Lead Bend Radius	R1	0.07	—	—
Foot Angle	θ	0°	—	8°
Mold Draft Angle	θ1	5°	—	15°
Lead Angle	θ2	0°	—	8°

**Notes:**

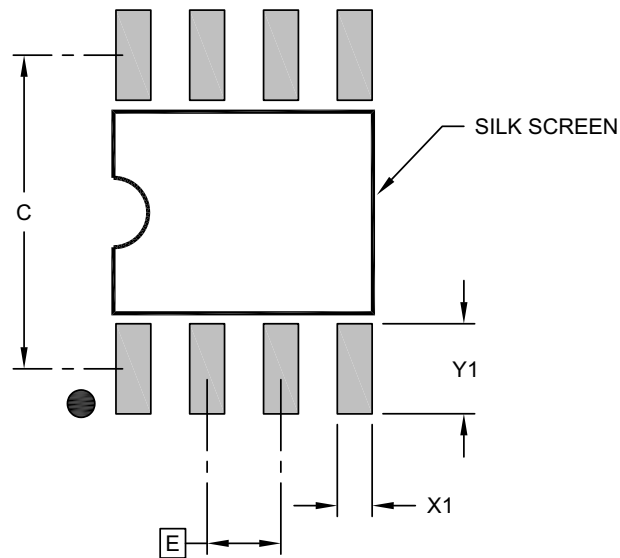
- Pin 1 visual index feature may vary, but must be located within the hatched area.
- § Significant Characteristic
- Dimensions D and E1 do not include mold flash or protrusions. Mold flash or protrusions shall not exceed 0.15mm per side.
- Dimensioning and tolerancing per ASME Y14.5M
  - BSC: Basic Dimension. Theoretically exact value shown without tolerances.
  - REF: Reference Dimension, usually without tolerance, for information purposes only.
- Datums A & B to be determined at Datum H.

Microchip Technology Drawing No. C04-057-3BX Rev J Sheet 2 of 2

# MIC705/6/7/8

## 8-Lead Plastic Small Outline (3BX) - Narrow, 3.90 mm (.150 In.) Body [SOIC]

**Note:** For the most current package drawings, please see the Microchip Packaging Specification located at <http://www.microchip.com/packaging>



RECOMMENDED LAND PATTERN

Units		MILLIMETERS		
Dimension Limits		MIN	NOM	MAX
Contact Pitch	E		1.27 BSC	
Contact Pad Spacing	C		5.40	
Contact Pad Width (X8)	X1			0.60
Contact Pad Length (X8)	Y1			1.55

Notes:

1. Dimensioning and tolerancing per ASME Y14.5M  
BSC: Basic Dimension. Theoretically exact value shown without tolerances.

Microchip Technology Drawing C04-2057-3BX Rev J

## APPENDIX A: REVISION HISTORY

### Revision A (October 2022)

- Converted Micrel document MIC705/6/7/8 to Microchip data sheet DS20006743A.
- Minor text changes throughout.
- Updated package outline drawing to current standard.

# MIC705/6/7/8

---

NOTES:

## PRODUCT IDENTIFICATION SYSTEM

To order or obtain information, e.g., on pricing or delivery, contact your local Microchip representative or sales office.

<u>Part Number</u>	<u>X</u>	<u>X</u>	<u>-XX</u>
Device	Package	Temperature Range	Media Type
<div> <div> <b>Device:</b>  MIC705: Microprocessor Supervisory Circuit (<a href="#">Note 1</a>)  MIC706: Microprocessor Supervisory Circuit (<a href="#">Note 2</a>)  MIC707: Microprocessor Supervisory Circuit (<a href="#">Note 3</a>)  MIC708: Microprocessor Supervisory Circuit (<a href="#">Note 4</a>) </div> <div> <b>Package:</b>  M = 8-Lead SOIC </div> <div> <b>Temperature Range:</b>  Y = -40°C to +85°C </div> <div> <b>Media Type:</b>  &lt;blank&gt; = 95/Tube  TR = 2,500/Reel </div> </div>			
<b>Note 1:</b> The MIC705MY has a 4.65V threshold, active-low reset, and watchdog timer. <b>Note 2:</b> The MIC706MY has a 4.40V threshold, active-low reset, and watchdog timer. <b>Note 3:</b> The MIC707MY has a 4.65V threshold, active-low reset, active-high reset, and watchdog timer. <b>Note 4:</b> The MIC708MY has a 4.40V threshold, active-low reset, active-high reset, and watchdog timer.			
<b>Examples:</b> a) MIC705MY: MIC705, 8-Lead SOIC, -40°C to +85°C Temperature Range, 95/Tube b) MIC706MY-TR: MIC706, 8-Lead SOIC, -40°C to +85°C Temperature Range, 2,500/Reel c) MIC707MY-TR: MIC707, 8-Lead SOIC, -40°C to +85°C Temperature Range, 2,500/Reel d) MIC708MY: MIC708, 8-Lead SOIC, -40°C to +85°C Temperature Range, 95/Tube e) MIC705MY-TR: MIC705, 8-Lead SOIC, -40°C to +85°C Temperature Range, 2,500/Reel f) MIC706MY: MIC706, 8-Lead SOIC, -40°C to +85°C Temperature Range, 95/Tube g) MIC707MY: MIC707, 8-Lead SOIC, -40°C to +85°C Temperature Range, 95/Tube h) MIC708MY-TR: MIC708, 8-Lead SOIC, -40°C to +85°C Temperature Range, 2,500/Reel  <b>Note:</b> Tape and Reel identifier only appears in the catalog part number description. This identifier is used for ordering purposes and is not printed on the device package. Check with your Microchip Sales Office for package availability with the Tape and Reel option.			

# MIC705/6/7/8

---

NOTES:

---

**Note the following details of the code protection feature on Microchip products:**

- Microchip products meet the specifications contained in their particular Microchip Data Sheet.
  - Microchip believes that its family of products is secure when used in the intended manner, within operating specifications, and under normal conditions.
  - Microchip values and aggressively protects its intellectual property rights. Attempts to breach the code protection features of Microchip product is strictly prohibited and may violate the Digital Millennium Copyright Act.
  - Neither Microchip nor any other semiconductor manufacturer can guarantee the security of its code. Code protection does not mean that we are guaranteeing the product is "unbreakable" Code protection is constantly evolving. Microchip is committed to continuously improving the code protection features of our products.
- 

This publication and the information herein may be used only with Microchip products, including to design, test, and integrate Microchip products with your application. Use of this information in any other manner violates these terms. Information regarding device applications is provided only for your convenience and may be superseded by updates. It is your responsibility to ensure that your application meets with your specifications. Contact your local Microchip sales office for additional support or, obtain additional support at <https://www.microchip.com/en-us/support/design-help/client-support-services>.

THIS INFORMATION IS PROVIDED BY MICROCHIP "AS IS". MICROCHIP MAKES NO REPRESENTATIONS OR WARRANTIES OF ANY KIND WHETHER EXPRESS OR IMPLIED, WRITTEN OR ORAL, STATUTORY OR OTHERWISE, RELATED TO THE INFORMATION INCLUDING BUT NOT LIMITED TO ANY IMPLIED WARRANTIES OF NON-INFRINGEMENT, MERCHANTABILITY, AND FITNESS FOR A PARTICULAR PURPOSE, OR WARRANTIES RELATED TO ITS CONDITION, QUALITY, OR PERFORMANCE.

IN NO EVENT WILL MICROCHIP BE LIABLE FOR ANY INDIRECT, SPECIAL, PUNITIVE, INCIDENTAL, OR CONSEQUENTIAL LOSS, DAMAGE, COST, OR EXPENSE OF ANY KIND WHATSOEVER RELATED TO THE INFORMATION OR ITS USE, HOWEVER CAUSED, EVEN IF MICROCHIP HAS BEEN ADVISED OF THE POSSIBILITY OR THE DAMAGES ARE FORESEEABLE. TO THE FULLEST EXTENT ALLOWED BY LAW, MICROCHIP'S TOTAL LIABILITY ON ALL CLAIMS IN ANY WAY RELATED TO THE INFORMATION OR ITS USE WILL NOT EXCEED THE AMOUNT OF FEES, IF ANY, THAT YOU HAVE PAID DIRECTLY TO MICROCHIP FOR THE INFORMATION.

Use of Microchip devices in life support and/or safety applications is entirely at the buyer's risk, and the buyer agrees to defend, indemnify and hold harmless Microchip from any and all damages, claims, suits, or expenses resulting from such use. No licenses are conveyed, implicitly or otherwise, under any Microchip intellectual property rights unless otherwise stated.

For information regarding Microchip's Quality Management Systems, please visit [www.microchip.com/quality](http://www.microchip.com/quality).

**Trademarks**

The Microchip name and logo, the Microchip logo, Adaptec, AVR, AVR logo, AVR Freaks, BesTime, BitCloud, CryptoMemory, CryptoRF, dsPIC, flexPWR, HELDO, IGLOO, JukeBlox, KeeLoq, Klear, LANCheck, LinkMD, maxStylus, maxTouch, MediaLB, megaAVR, Microsemi, Microsemi logo, MOST, MOST logo, MPLAB, OptoLyzer, PIC, picoPower, PICSTART, PIC32 logo, PolarFire, Prochip Designer, QTouch, SAM-BA, SenGenuity, SpyNIC, SST, SST Logo, SuperFlash, Symmetricom, SyncServer, Tachyon, TimeSource, tinyAVR, UNI/O, Vectron, and XMEGA are registered trademarks of Microchip Technology Incorporated in the U.S.A. and other countries.

AgileSwitch, APT, ClockWorks, The Embedded Control Solutions Company, EtherSynch, Flashtec, Hyper Speed Control, HyperLight Load, Libero, motorBench, mTouch, Powermite 3, Precision Edge, ProASIC, ProASIC Plus, ProASIC Plus logo, Quiet-Wire, SmartFusion, SyncWorld, Temux, TimeCesium, TimeHub, TimePictra, TimeProvider, TrueTime, and ZL are registered trademarks of Microchip Technology Incorporated in the U.S.A.

Adjacent Key Suppression, AKS, Analog-for-the-Digital Age, Any Capacitor, AnyIn, AnyOut, Augmented Switching, BlueSky, BodyCom, Clockstudio, CodeGuard, CryptoAuthentication, CryptoAutomotive, CryptoCompanion, CryptoController, dsPICDEM, dsPICDEM.net, Dynamic Average Matching, DAM, ECAN, Espresso T1S, EtherGREEN, GridTime, IdealBridge, In-Circuit Serial Programming, ICSP, INICnet, Intelligent Paralleling, IntelliMOS, Inter-Chip Connectivity, JitterBlocker, Knob-on-Display, KoD, maxCrypto, maxView, memBrain, Mindi, MiWi, MPASM, MPF, MPLAB Certified logo, MPLIB, MPLINK, MultiTRAK, NetDetach, Omniscient Code Generation, PICDEM, PICDEM.net, PICkit, PICtail, PowerSmart, PureSilicon, QMatrix, REAL ICE, Ripple Blocker, RTAX, RTG4, SAM-ICE, Serial Quad I/O, simpleMAP, SimpliPHY, SmartBuffer, SmartHLS, SMART-I.S., storClad, SQI, SuperSwitcher, SuperSwitcher II, Switchtec, SynchroPHY, Total Endurance, Trusted Time, TSHARC, USBCheck, VariSense, VectorBlox, VeriPHY, ViewSpan, WiperLock, XpressConnect, and ZENA are trademarks of Microchip Technology Incorporated in the U.S.A. and other countries.

SQTP is a service mark of Microchip Technology Incorporated in the U.S.A.

The Adaptec logo, Frequency on Demand, Silicon Storage Technology, and Symmcom are registered trademarks of Microchip Technology Inc. in other countries.

GestIC is a registered trademark of Microchip Technology Germany II GmbH & Co. KG, a subsidiary of Microchip Technology Inc., in other countries.

All other trademarks mentioned herein are property of their respective companies.

© 2022, Microchip Technology Incorporated and its subsidiaries.

All Rights Reserved.

ISBN: 978-1-6683-1403-6

## Worldwide Sales and Service

### AMERICAS

**Corporate Office**  
2355 West Chandler Blvd.  
Chandler, AZ 85224-6199  
Tel: 480-792-7200  
Fax: 480-792-7277  
Technical Support:  
<http://www.microchip.com/support>  
Web Address:  
[www.microchip.com](http://www.microchip.com)

**Atlanta**  
Duluth, GA  
Tel: 678-957-9614  
Fax: 678-957-1455

**Austin, TX**  
Tel: 512-257-3370

**Boston**  
Westborough, MA  
Tel: 774-760-0087  
Fax: 774-760-0088

**Chicago**  
Itasca, IL  
Tel: 630-285-0071  
Fax: 630-285-0075

**Dallas**  
Addison, TX  
Tel: 972-818-7423  
Fax: 972-818-2924

**Detroit**  
Novi, MI  
Tel: 248-848-4000

**Houston, TX**  
Tel: 281-894-5983

**Indianapolis**  
Noblesville, IN  
Tel: 317-773-8323  
Fax: 317-773-5453  
Tel: 317-536-2380

**Los Angeles**  
Mission Viejo, CA  
Tel: 949-462-9523  
Fax: 949-462-9608  
Tel: 951-273-7800

**Raleigh, NC**  
Tel: 919-844-7510

**New York, NY**  
Tel: 631-435-6000

**San Jose, CA**  
Tel: 408-735-9110  
Tel: 408-436-4270

**Canada - Toronto**  
Tel: 905-695-1980  
Fax: 905-695-2078

### ASIA/PACIFIC

**Australia - Sydney**  
Tel: 61-2-9868-6733

**China - Beijing**  
Tel: 86-10-8569-7000

**China - Chengdu**  
Tel: 86-28-8665-5511

**China - Chongqing**  
Tel: 86-23-8980-9588

**China - Dongguan**  
Tel: 86-769-8702-9880

**China - Guangzhou**  
Tel: 86-20-8755-8029

**China - Hangzhou**  
Tel: 86-571-8792-8115

**China - Hong Kong SAR**  
Tel: 852-2943-5100

**China - Nanjing**  
Tel: 86-25-8473-2460

**China - Qingdao**  
Tel: 86-532-8502-7355

**China - Shanghai**  
Tel: 86-21-3326-8000

**China - Shenyang**  
Tel: 86-24-2334-2829

**China - Shenzhen**  
Tel: 86-755-8864-2200

**China - Suzhou**  
Tel: 86-186-6233-1526

**China - Wuhan**  
Tel: 86-27-5980-5300

**China - Xian**  
Tel: 86-29-8833-7252

**China - Xiamen**  
Tel: 86-592-2388138

**China - Zhuhai**  
Tel: 86-756-3210040

### ASIA/PACIFIC

**India - Bangalore**  
Tel: 91-80-3090-4444

**India - New Delhi**  
Tel: 91-11-4160-8631

**India - Pune**  
Tel: 91-20-4121-0141

**Japan - Osaka**  
Tel: 81-6-6152-7160

**Japan - Tokyo**  
Tel: 81-3-6880-3770

**Korea - Daegu**  
Tel: 82-53-744-4301

**Korea - Seoul**  
Tel: 82-2-554-7200

**Malaysia - Kuala Lumpur**  
Tel: 60-3-7651-7906

**Malaysia - Penang**  
Tel: 60-4-227-8870

**Philippines - Manila**  
Tel: 63-2-634-9065

**Singapore**  
Tel: 65-6334-8870

**Taiwan - Hsin Chu**  
Tel: 886-3-577-8366

**Taiwan - Kaohsiung**  
Tel: 886-7-213-7830

**Taiwan - Taipei**  
Tel: 886-2-2508-8600

**Thailand - Bangkok**  
Tel: 66-2-694-1351

**Vietnam - Ho Chi Minh**  
Tel: 84-28-5448-2100

### EUROPE

**Austria - Wels**  
Tel: 43-7242-2244-39  
Fax: 43-7242-2244-393

**Denmark - Copenhagen**  
Tel: 45-4485-5910  
Fax: 45-4485-2829

**Finland - Espoo**  
Tel: 358-9-4520-820

**France - Paris**  
Tel: 33-1-69-53-63-20  
Fax: 33-1-69-30-90-79

**Germany - Garching**  
Tel: 49-8931-9700

**Germany - Haan**  
Tel: 49-2129-3766400

**Germany - Heilbronn**  
Tel: 49-7131-72400

**Germany - Karlsruhe**  
Tel: 49-721-625370

**Germany - Munich**  
Tel: 49-89-627-144-0  
Fax: 49-89-627-144-44

**Germany - Rosenheim**  
Tel: 49-8031-354-560

**Israel - Ra'anana**  
Tel: 972-9-744-7705

**Italy - Milan**  
Tel: 39-0331-742611  
Fax: 39-0331-466781

**Italy - Padova**  
Tel: 39-049-7625286

**Netherlands - Drunen**  
Tel: 31-416-690399  
Fax: 31-416-690340

**Norway - Trondheim**  
Tel: 47-7288-4388

**Poland - Warsaw**  
Tel: 48-22-3325737

**Romania - Bucharest**  
Tel: 40-21-407-87-50

**Spain - Madrid**  
Tel: 34-91-708-08-90  
Fax: 34-91-708-08-91

**Sweden - Gothenberg**  
Tel: 46-31-704-60-40

**Sweden - Stockholm**  
Tel: 46-8-5090-4654

**UK - Wokingham**  
Tel: 44-118-921-5800  
Fax: 44-118-921-5820



# Mouser Electronics

Authorized Distributor

Click to View Pricing, Inventory, Delivery & Lifecycle Information:

[Microchip:](#)

[MIC705MY](#) [MIC707MY](#) [MIC708MY](#) [MIC706MY](#) [MIC706PMY](#) [MIC706RMY](#) [MIC706SMY](#) [MIC706TMY](#)  
[MIC708RMY](#) [MIC708SMY](#) [MIC708TMY](#) [MIC708MY-TR](#) [MIC706RMY-TR](#) [MIC708TMY-TR](#) [MIC708RMY-TR](#)  
[MIC706TMY-TR](#) [MIC706SMY-TR](#) [MIC706PMY-TR](#) [MIC706MY-TR](#) [MIC708SMY-TR](#) [MIC707MY-TR](#) [MIC705MY-TR](#)